

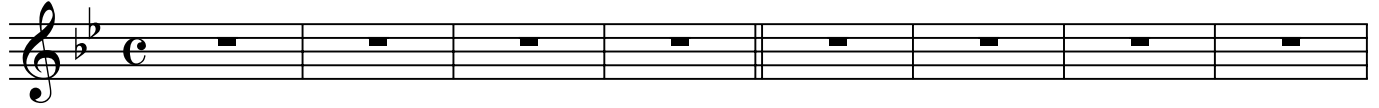
Clarinet in B \flat 2

City of Delusion

from "Black Holes and Revelations"

Muse
arr. Dallas C. Burke

5



13



21



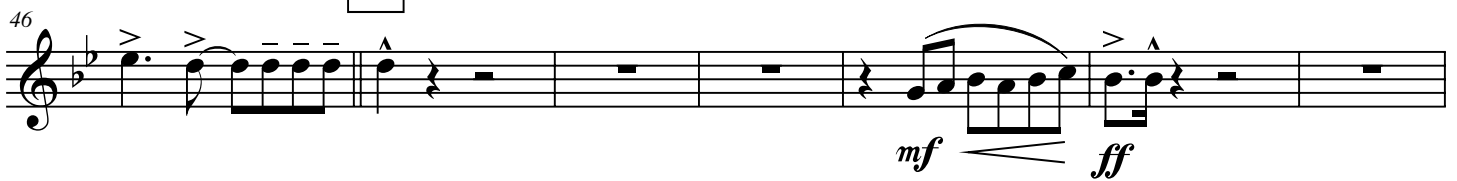
29



38



47



55

53



mp

53-59: Musical staff starting at measure 53. It contains several measures of rests followed by a melodic phrase starting at measure 57. The phrase consists of a quarter note, followed by an eighth-note triplet, and a quarter note. The dynamic marking *mp* is placed below the staff.

63

60



60-65: Musical staff starting at measure 60. It contains several measures of rests followed by a melodic phrase starting at measure 62. The phrase consists of a quarter note, followed by an eighth-note triplet, and a quarter note. The dynamic marking *mp* is placed below the staff.

71

66



tr

mp

f

66-71: Musical staff starting at measure 66. It begins with a trill (*tr*) over a quarter note. This is followed by a series of quarter notes with sharps. The dynamic marking *mp* is placed below the staff, and *f* is placed below the staff at the end of the phrase.

72

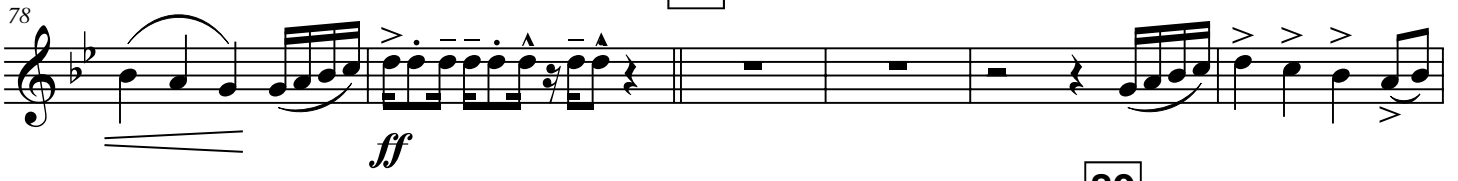


mf

72-77: Musical staff starting at measure 72. It contains a series of quarter notes with accents and slurs. The dynamic marking *mf* is placed below the staff.

80

78



ff

78-79: Musical staff starting at measure 78. It contains a series of quarter notes with accents and slurs. The dynamic marking *ff* is placed below the staff.

89

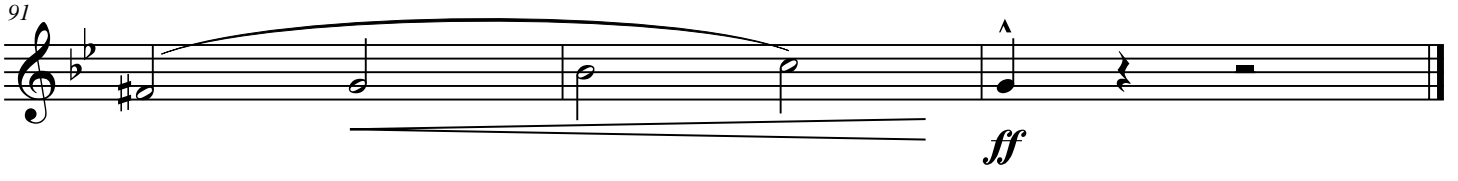
84



mf

84-89: Musical staff starting at measure 84. It contains a series of quarter notes with accents and slurs. The dynamic marking *mf* is placed below the staff.

91



ff

91-92: Musical staff starting at measure 91. It contains a series of quarter notes with a long slur over the first three notes. The dynamic marking *ff* is placed below the staff.